

MONTHLY MEMBERSHIP PROGRESS REPORT

District 5 NE

Results as of: 2/29/2024

GMT:

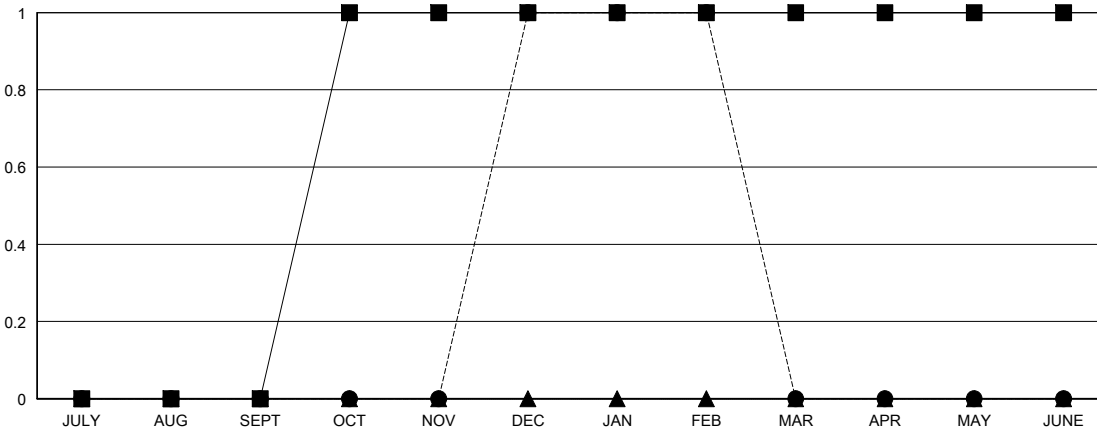
LOCATION NORTH DAKOTA

GMT CA

| Clubs | | | |
|-----------------------|---------------|-----------|---------------|
| RESULTS FOR 2023-2024 | | | |
| QUARTER | NEW CLUB GOAL | NEW CLUBS | DROPPED CLUBS |
| JULY/AUG/SEPT | 0 | 0 | 0 |
| OCT/NOV/DEC | 1 | 1 | 0 |
| JAN/FEB/MAR | 0 | 0 | 0 |
| APR/MAY/JUNE | 0 | 0 | 0 |

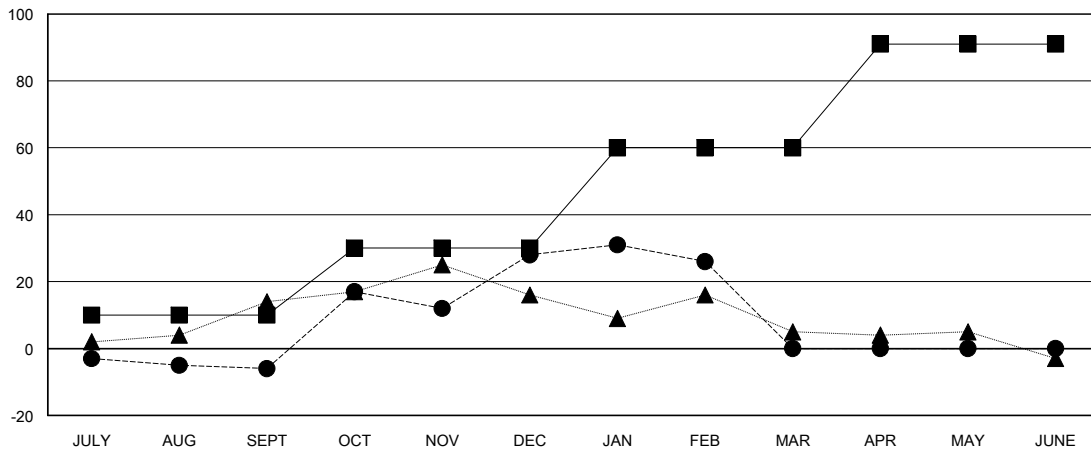
| Members | | | |
|-----------------------|------------------------|----------------------|--|
| RESULTS FOR 2023-2024 | | | |
| QUARTER | MEMBER GROWTH NET GOAL | MEMBER GROWTH ACTUAL | DROPPED MEMBERS ACTUAL (including transfers) |
| JULY/AUG/SEPT | 10 | 21 | 25 |
| OCT/NOV/DEC | 20 | 64 | 26 |
| JAN/FEB/MAR | 30 | 22 | 23 |
| APR/MAY/JUNE | 31 | 0 | 0 |

GOALS AND ACTUAL NEW CLUBS CUMULATIVE



- - CURRENT YEAR GOALS FOR NEW CLUBS
- - CURRENT YEAR ACTUAL NEW CLUBS
- ▲ - LAST YEAR ACTUAL NEW CLUBS

GOALS AND ACTUAL MEMBERS CUMULATIVE



- - MEMBER GROWTH NET GOAL
- - MEMBER GROWTH ACTUAL
- ▲ - LAST YEAR MEMBERSHIP ACTUAL

| | | |
|--|---|--|
| DROPPED CLUBS: 0 | 27 CLUBS OF 52 ADDED 1 OR MORE NEW MEMBERS | GENDER DISTRIBUTION MALE 858 (71.62%) FEMALE 339 (28.30%) |
| DROPPED MEMBERS DECEASED 10 CLUB CANCELLED 0 OTHER 64 TOTAL 74 | CLICK HERE FOR CUMULATIVE MEMBERSHIP DATA | TOTAL FAMILY UNIT MEMBERS 139 FAMILY MEMBERS PAYING HALF DUES 70 |